



THE COLLEGES OF MEDICINE OF SOUTH AFRICA

Incorporated Association not for gain
Reg No 1955/000003/08

Examination for the Subspecialty Certificate in Nephrology of the College of Paediatricians of South Africa

1 March 2018

Paper 1

(3 hours)

All questions are to be answered. Each question to be answered in a separate book (or books if more than one is required for the one answer)

- 1 Discuss congenital nephrotic syndrome with regards to
 - a) Definition. (3)
 - b) Aetiology. (7)
 - c) Management of oedema. (5)
 - d) Long term management. (10)[25]

- 2 Discuss Posterior Urethral Valves in children in relation to
 - a) Postulated embryological defects. (3)
 - b) Prenatal interventions. (3)
 - c) Poor prognostic factors. (7)
 - d) Complications and outcomes. (12)[25]

- 3 A child is diagnosed with bilateral nephrocalcinosis. Describe the relevant aspects related to
 - a) Clinical assessment. (7)
 - b) Investigations. (6)
 - c) Differential diagnosis. (7)
 - d) Treatment. (5)[25]

- 4 Discuss persistent proteinuria with regards to
 - a) Mechanisms of proteinuria. (3)
 - b) Measurement of proteinuria. (3)
 - c) Approach to diagnosis. (10)
 - d) Investigations. (6)
 - e) Management. (3)[25]



THE COLLEGES OF MEDICINE OF SOUTH AFRICA

Incorporated Association not for gain
Reg No 1955/000003/08

Examination for the Subspecialty Certificate in Nephrology of the
College of Paediatricians of South Africa

2 March 2018

Paper 2

(3 hours)

All questions are to be answered. Each question to be answered in a separate book (or books if more than one is required for the one answer)

- 1 Discuss the management and ethical dilemmas in South African children with
 - a) HIV related renal disease which progress to end stage renal disease regarding Chronic Renal Replacement Therapy and Transplantation. (5)
 - b) Chronic dialysis and transplantation in an infant younger than 1 year. (5)[10]

- 2 Discuss post-transplant infection in patients in context of
 - a) Aetiology. (4)
 - b) Surveillance. (6)[10]

- 3 Describe factors contributing to growth failure in children with chronic kidney disease. [10]

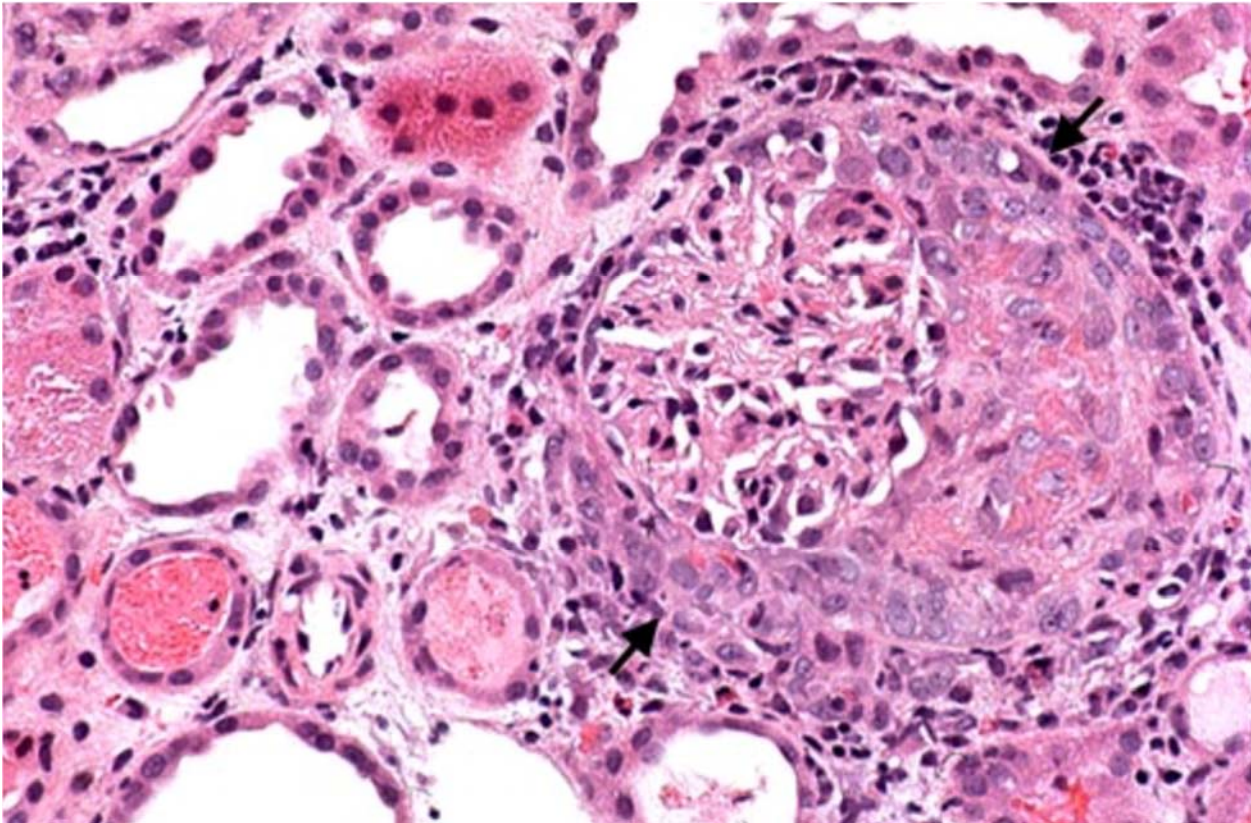
- 4 A 7-year-old presents with asymptomatic haematuria. Discuss your approach regarding
 - a) Investigations. (5)
 - b) Differential diagnosis. (5)[10]

- 5 What would your approach be to a child with a metabolic acidosis (a schematic approach). [10]

- 6 Tabulate the features of ARPKD and ADPKD regarding
 - a) Renal abnormalities. (3)
 - b) Extra renal involvement. (3)
 - c) Genetics. (2)
 - d) Definitive treatment. (2)[10]

- 7 Discuss the following renal side effects and/or toxicity of
 - a) Calcineurin inhibitors. (4)
 - b) Non-steroidal anti-inflammatories. (3)
 - c) Angiotensin converting enzyme inhibitors. (3)[10]

- 8 Tabulate the differences between Gitelman's and Bartter's syndrome (2)
a) Primary site of defect. (3)
b) Transporter defect. (5)
c) Presenting features. [10]
- 9 Discuss your approach to a child with polyuria. [10]
- 10 The following questions are related to the picture below



- a) Describe the abnormalities present. (4)
b) List the possible underlying causes for these abnormalities. (6)
[10]